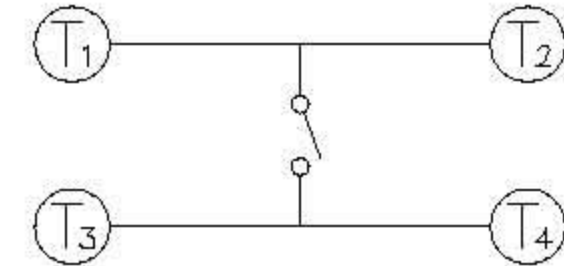
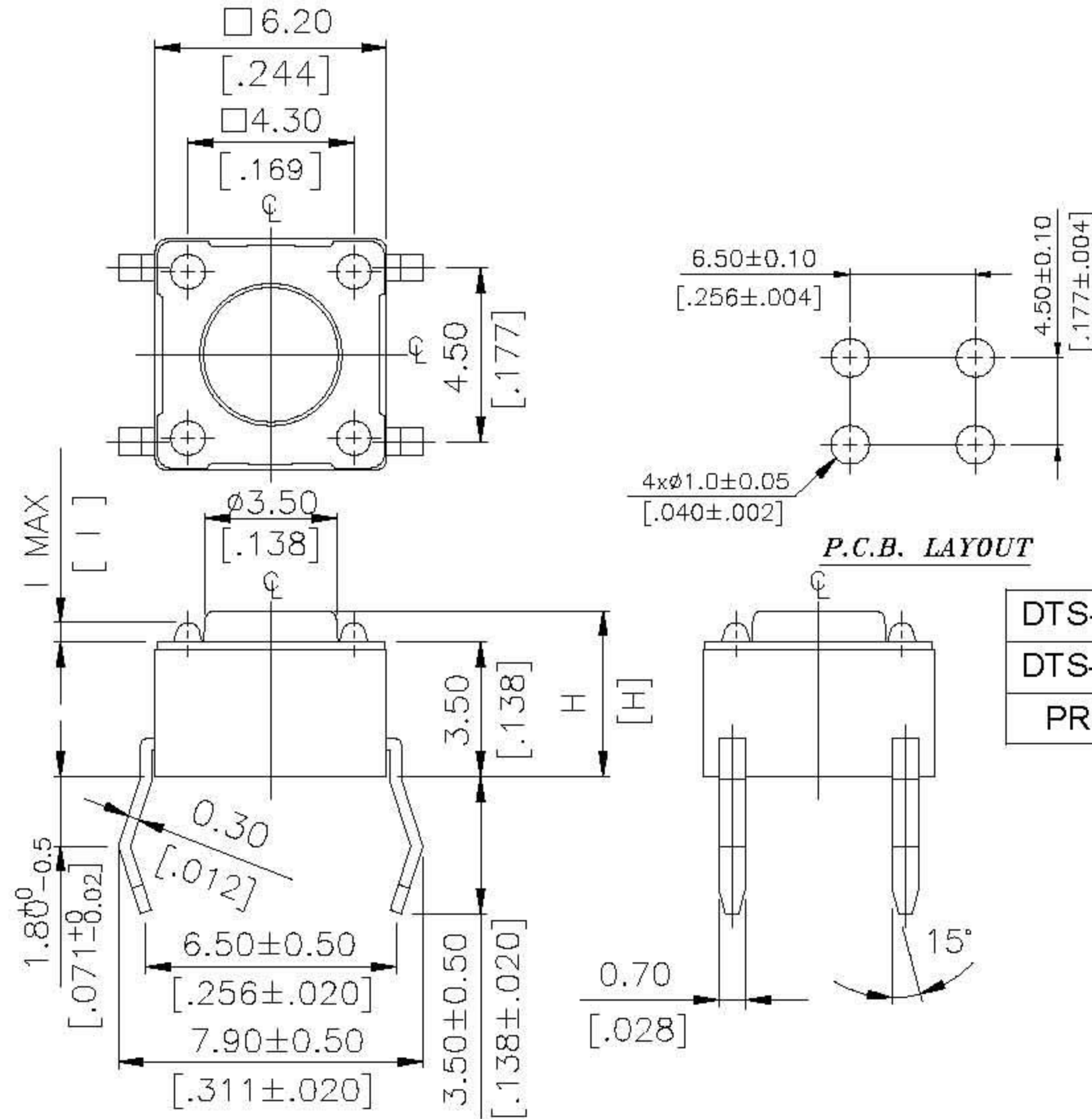


DTS-6(2) & KTSC-6(2) SERIES



DIMENSIONS

DTS-61~66 □



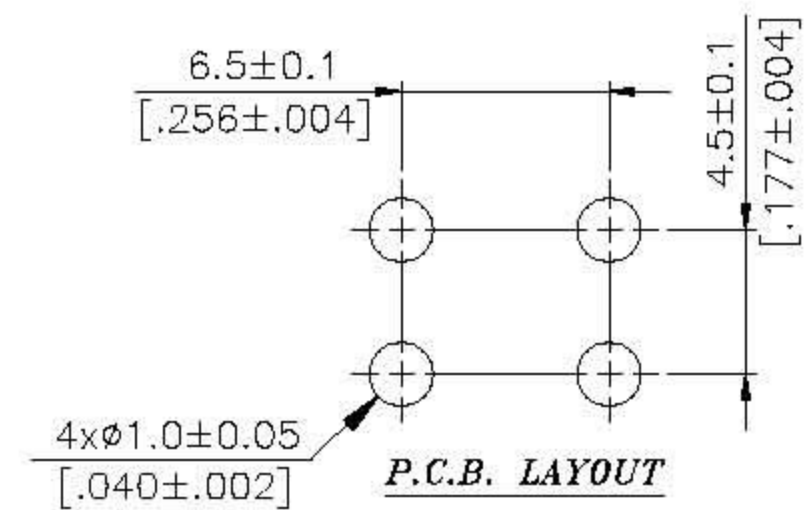
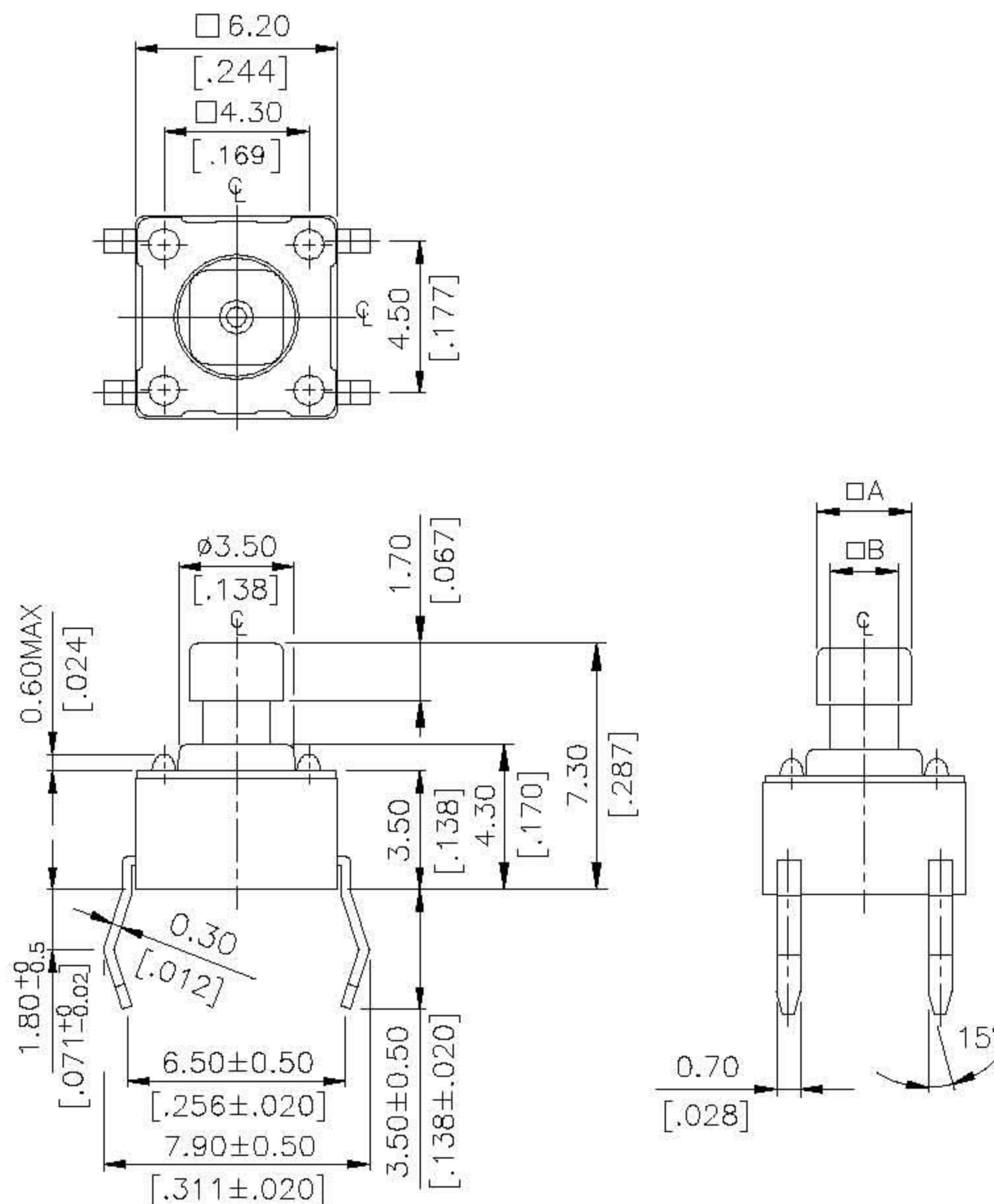
CIRCUIT DIAGRAM

DTS-62~66 □	0.6 MAX	.0236 MAX
DTS-61 □	0.5 MAX	.0197 MAX
PROD. NO.	I	INCHES.

DTS-6 6 □	13.0 [.512]
DTS-6 5 □	9.5 [.374]
DTS-6 3 □	7.0 [.275]
DTS-6 2 □	5.0 [.197]
DTS-6 1 □	4.3 [.169]
PROD. NO.	H

General Tolerance : ±0.2mm

DTS-644、648 □



CIRCUIT DIAGRAM

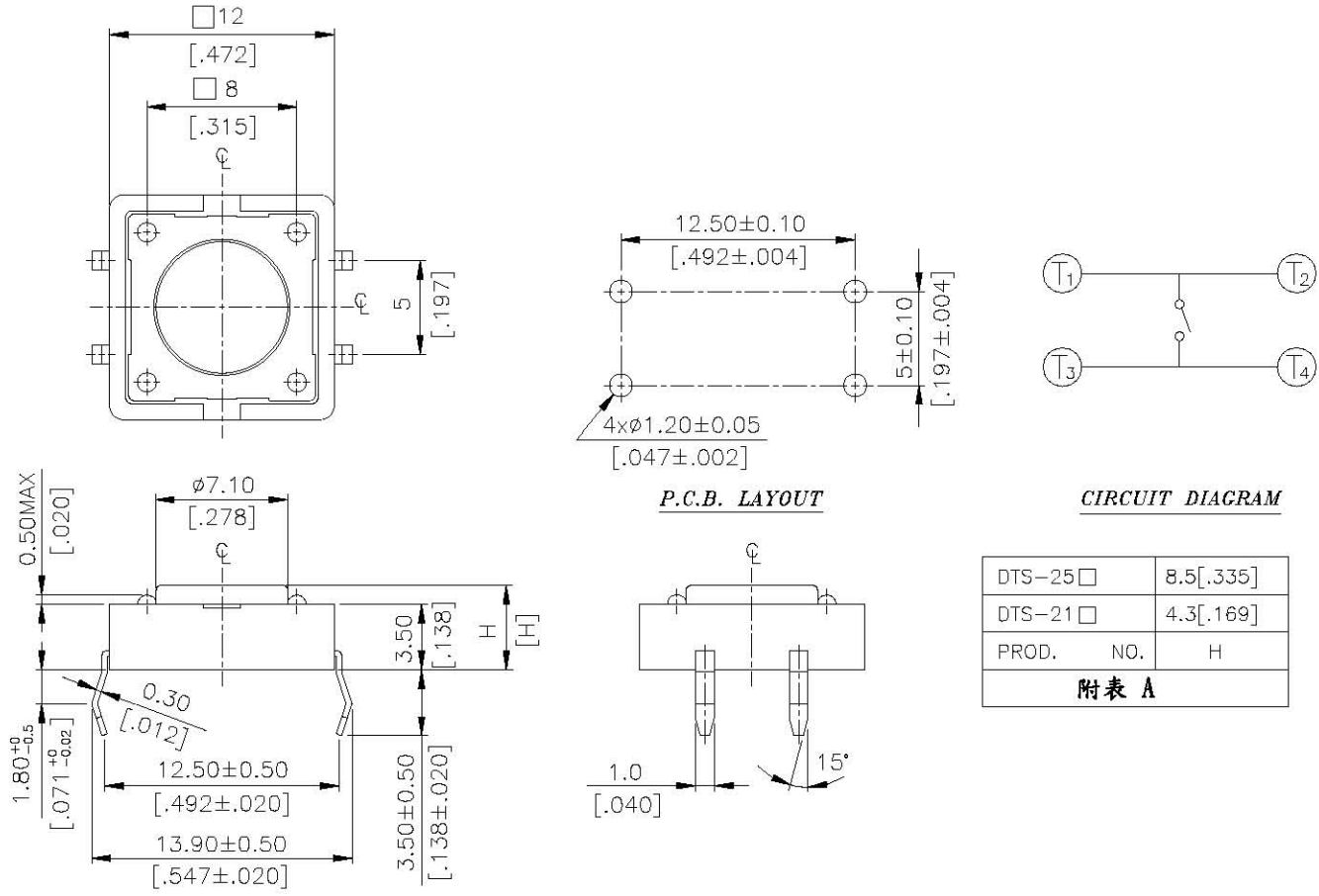
DTS-644 □	□A	2.4	[.095]
	□B	1.6	[.063]
DTS-648 □	□A	2.8	[.110]
	□B	2.0	[.079]
PROD. NO.	LOC.	MM.	INCH.

DIMENSION

DTS-64*	先鍍層後沖, 雙面鍍層 (Ag/0.3μM MIN)
DTS-64*-G1	先沖後鍍銀, (Ag/0.5μM MIN)

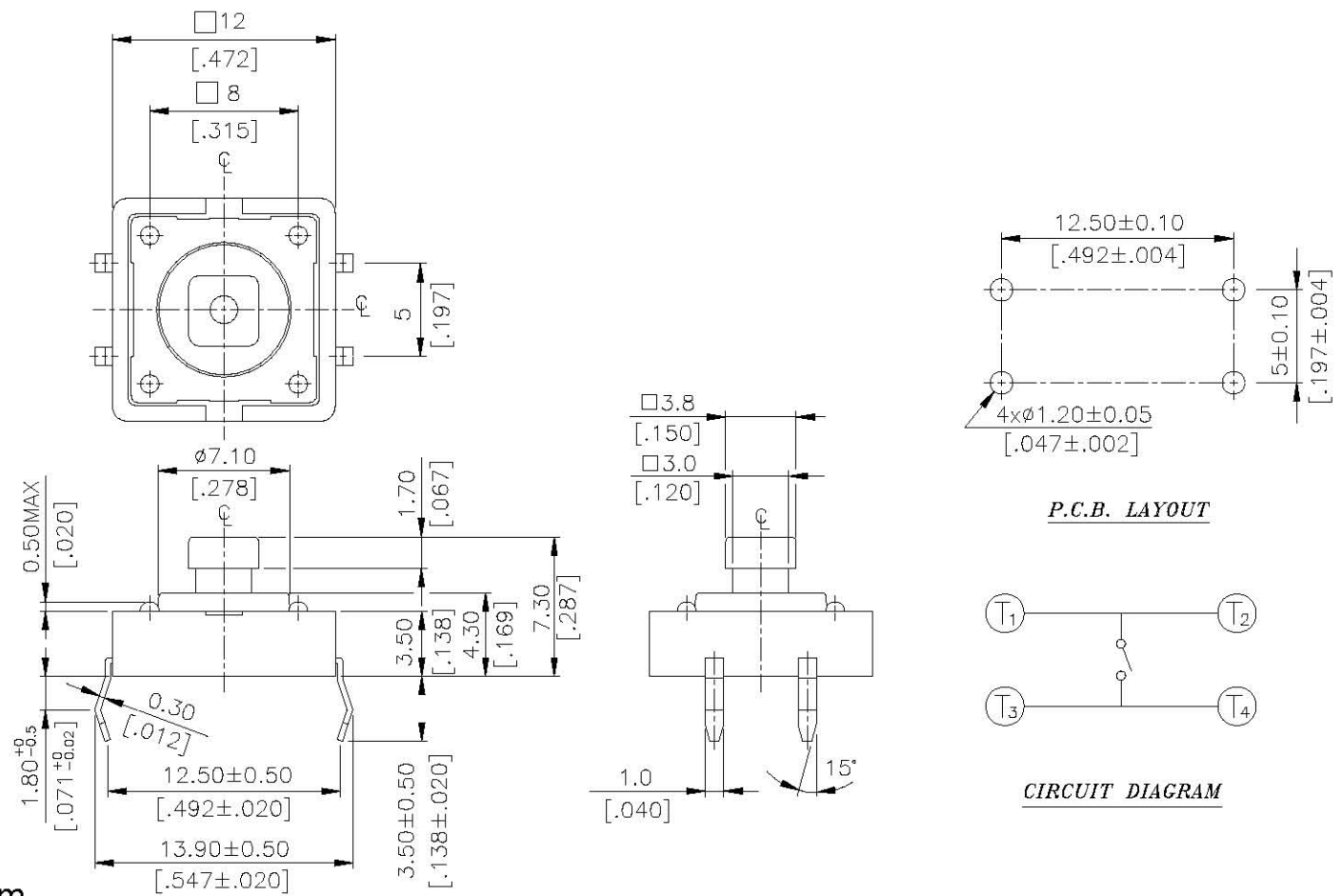
General Tolerance : ±0.2mm

DTS-21、25



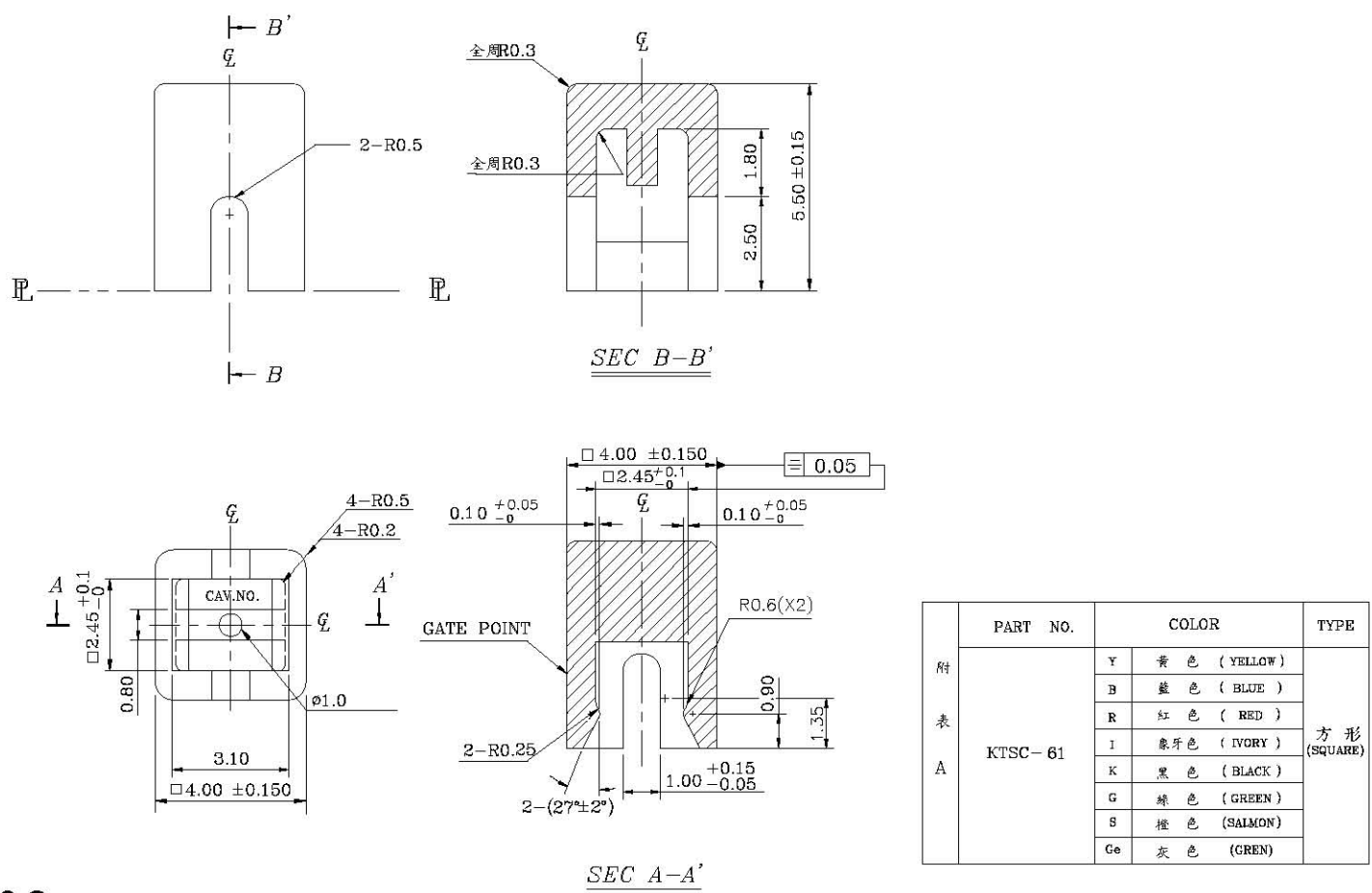
General Tolerance : ±0.2mm

DTS-24



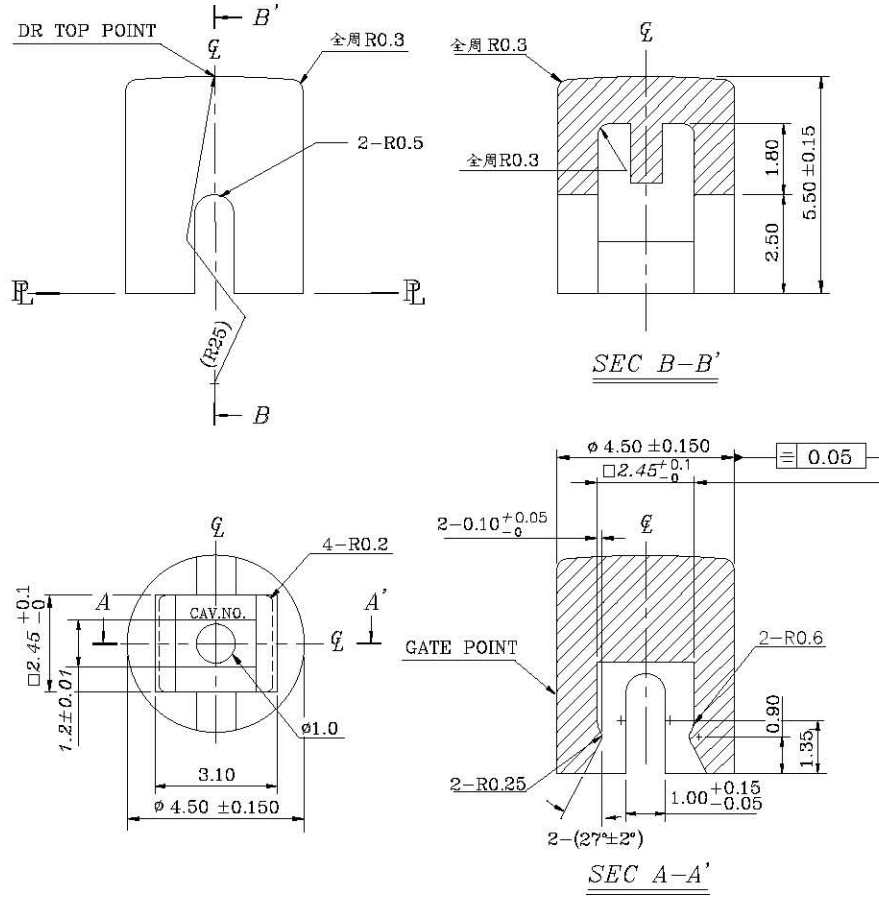
General Tolerance : ±0.2mm

KTSC-61



General Tolerance : ±0.2mm

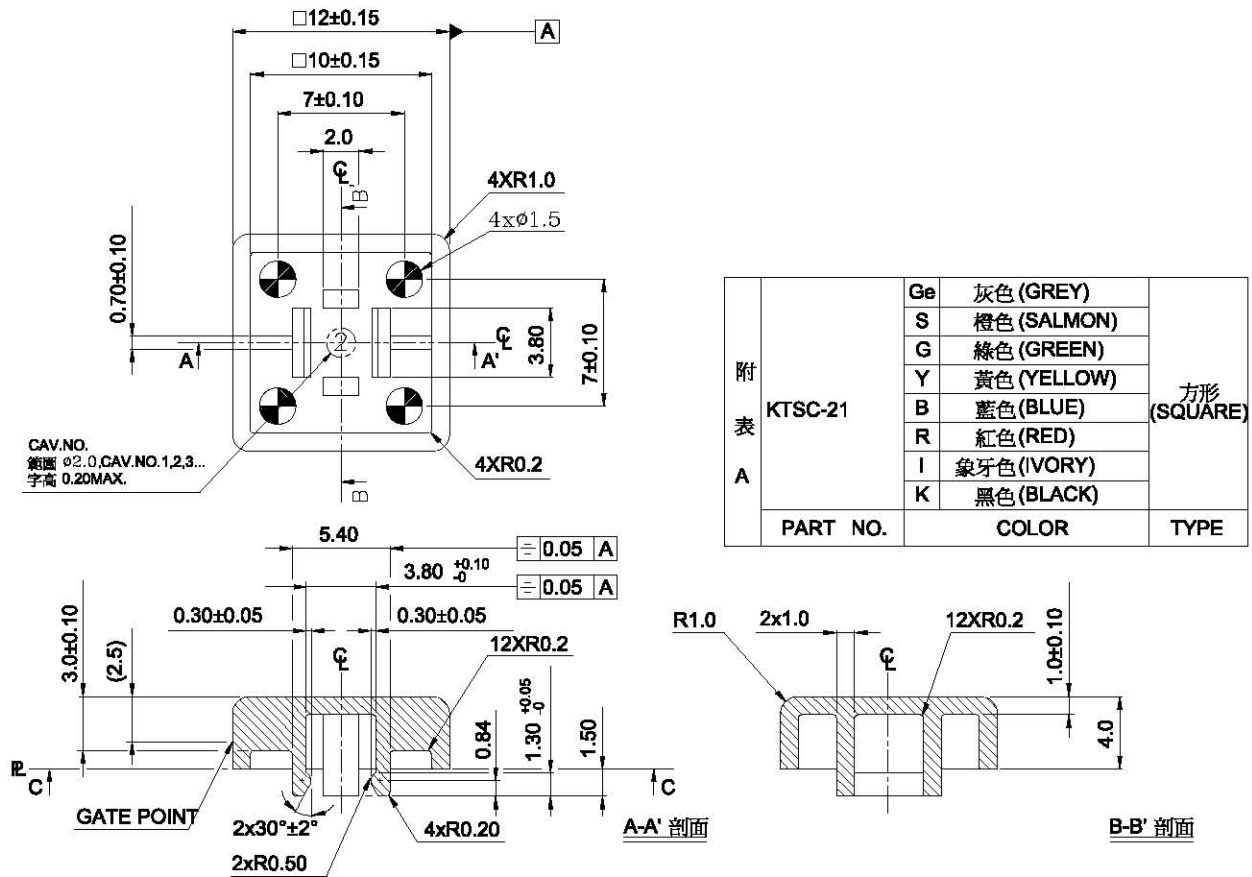
KTSC-62



附 表 A	PART NO.	COLOR	TYPE
	KTSC-62	Y	黄色 (YELLOW)
B		蓝色 (BLUE)	
R		红色 (RED)	
I		象牙白 (IVORY)	
K		黑色 (BLACK)	
G		绿色 (GREEN)	
S		橙色 (SALMON)	
Ge	灰色 (GREY)		

General Tolerance : ±0.2mm

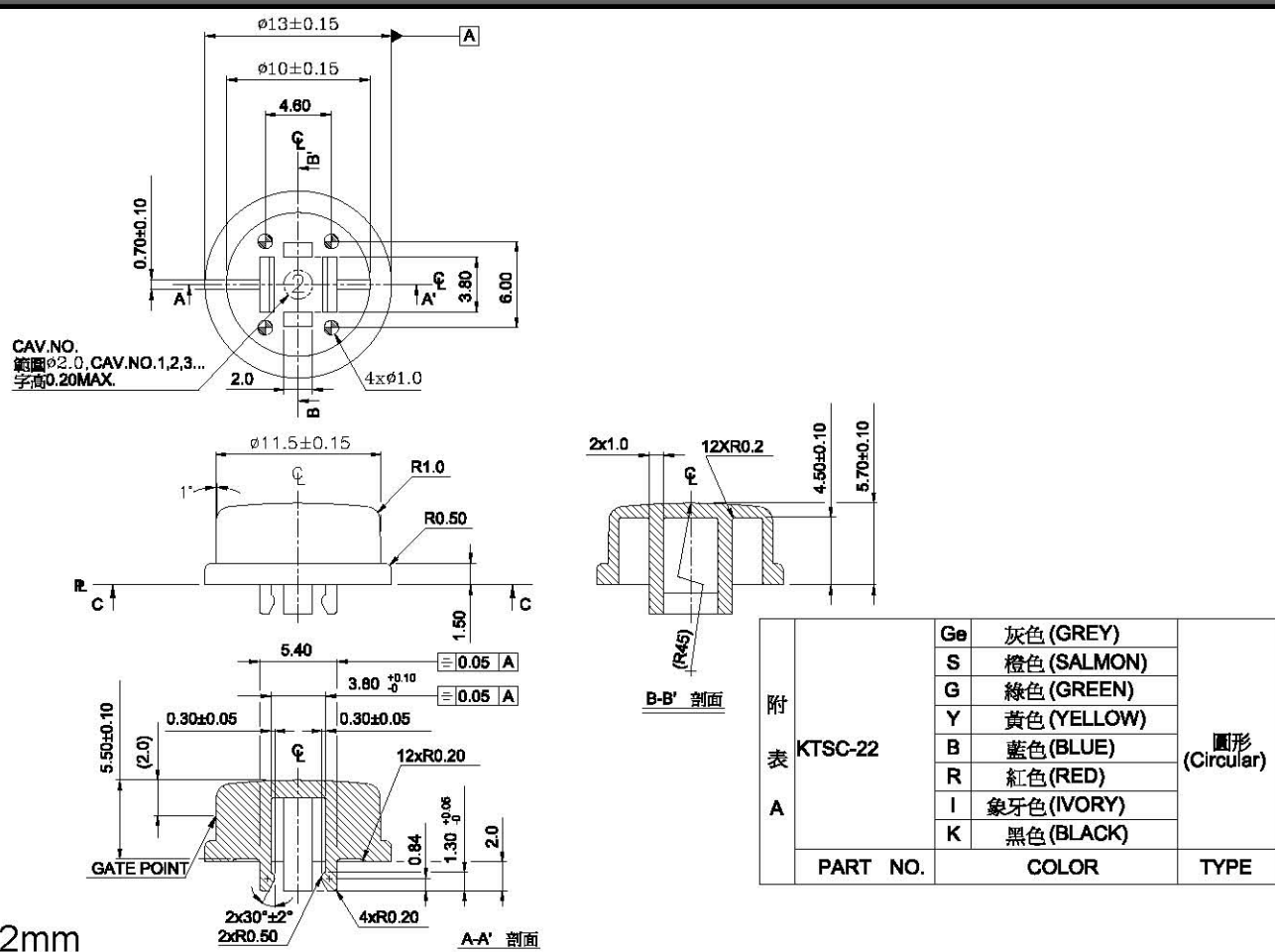
KTSC-21



附 表 A	PART NO.	COLOR	TYPE
	KTSC-21	Ge	灰色 (GREY)
S		橙色 (SALMON)	
G		绿色 (GREEN)	
Y		黄色 (YELLOW)	
B		蓝色 (BLUE)	
R		红色 (RED)	
I		象牙色 (IVORY)	
K	黑色 (BLACK)		

General Tolerance : ±0.2mm

KTSC-22



附 表 A	PART NO.	COLOR	TYPE
	KTSC-22	Ge	灰色 (GREY)
S		橙色 (SALMON)	
G		绿色 (GREEN)	
Y		黄色 (YELLOW)	
B		蓝色 (BLUE)	
R		红色 (RED)	
I		象牙色 (IVORY)	
K	黑色 (BLACK)		

General Tolerance : ±0.2mm

CAP PART NO.

KTSC - □□□

Cap color :

Y = Yellow

B = Blue

R = Red

I = Ivory

K = Black

G = Green

S = Salmon

Ge = Gray

Cap Type :

1 = Square

2 = Round

Prod. Size : <Tactile Switch>

6 = 6X6 mm

2 = 12X12 mm

▲ <Only For DTS□-644&24>

▲ <Bulk Pack>

SPECIFICATION

△MECHANICAL

Operation Force: 520±130gf Yellow(Y)

320±80gf Salmon(S)

260±50gf Red(R)

160±50gf Brown(N)

100±50gf Black(K)

Stop Strength: Place the switch such that vertical, a static load of 3 kgf shall be applied in the direction of stem operation for a period of 15 seconds.

Stroke : (12x12) 0.35±0.1mm

(6x6) 0.25±0.2/-0.1mm

Operation Temperature Range : -25°C to +70°C

Storage Temperature Range : -30°C to +80°C

△ELECTRICAL (6X6)

Electrical Life : 300,000 cycles for 320gf, 520gf

500,000 cycles for 260gf

1,000,000 cycles for 100gf, 160gf

Rating : 50 Ma , 12 VDC

Contact Resistance : 100mΩ max

Insulation Resistance : 100MΩ min , 500 VDC

Dielectric Strength : 250 VAC / minute

Contact Arrangement : 1 pole 1 throw

MATERIAL

△COVER : Stainless steel

△CONTACT DISC : Phosphor bronze with silver cladding

△TERMINAL : Brass with silver plated

△BASE : UL94V-0 Nylon Thermoplastic

△STEM : UL94V-0 Nylon Thermoplastic

Color : Black(100gf) , Brown(160gf) , Red(260gf)

Salmon(320gf) , Yellow(520gf)

Silicon Rubber Color : Red (300gf) [DTS-21 Only]

CAP : Thermoplastic ABS

△ELECTRICAL (12X12)

Electrical Life: 100,000 cycles for 320gf

100,000 cycles for 260gf

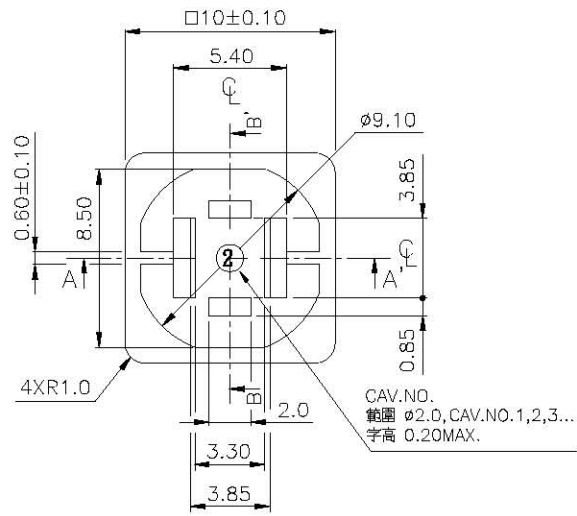
200,000 cycles for 160gf

SOLDERING PROCESS

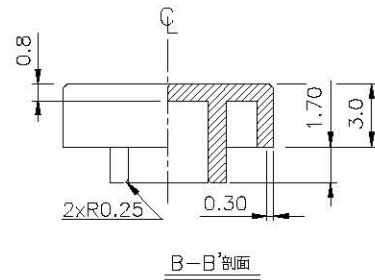
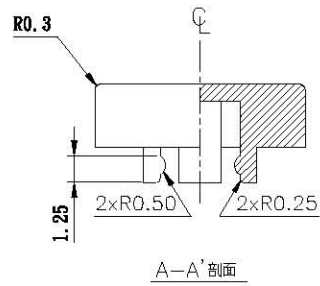
△WAVE SOLDERING: Recommended solder temperature at 500°F(260°C) max. 5 seconds subject to PBC 1.6mm thickness (For through hole type)

△Hand soldering : Use a soldering iron of 30 watts , controlled at 350°C approximately max 5 seconds while applying solder.

KTSC-23□



附 表 A	KTSC-23	S	橙色 (SALMON)	方形 (SQUARE)
		G	綠色 (GREEN)	
		Y	黃色 (YELLOW)	
		B	藍色 (BLUE)	
		R	紅色 (RED)	
		I	象牙色 (IVORY)	
K	黑色 (BLACK)			
PART NO.		COLOR		TYPE



General Tolerance : ±0.2mm

HOW TO ORDER

D T S □ - □ □ □ - □ - □

Package style:

- = Bulk pack
- ▲ B = Tube
- (▲ Except DTS-63、644、648、65、66)

Soldering:

- V = Lead Free Solderable

Color of stem for operating force:

- ▲ K = Black , 100gf
- N = Brown , 160gf
- R = Red , 260gf
- S = Salmon , 320gf
- ▲ Y = Yellow , 520gf
- (▲ 12x12 K、Y Unavailable)

Dimension H :

- ◎ 6 X 6 mm
- 1 = 4.3 mm
- 2 = 5.0 mm
- 3 = 7.0 mm
- 44 = 7.3 mm(SQ.)x2.4 mm
- 48 = 7.3 mm(SQ.)x2.8 mm
- 5 = 9.51 mm
- 6 = 13 mm

- ◎ 12 x 12 mm
- 1 = 4.3 mm
- 4 = 7.3 mm (SQ.) x 3.8 mm
- 5 = 8.5 mm

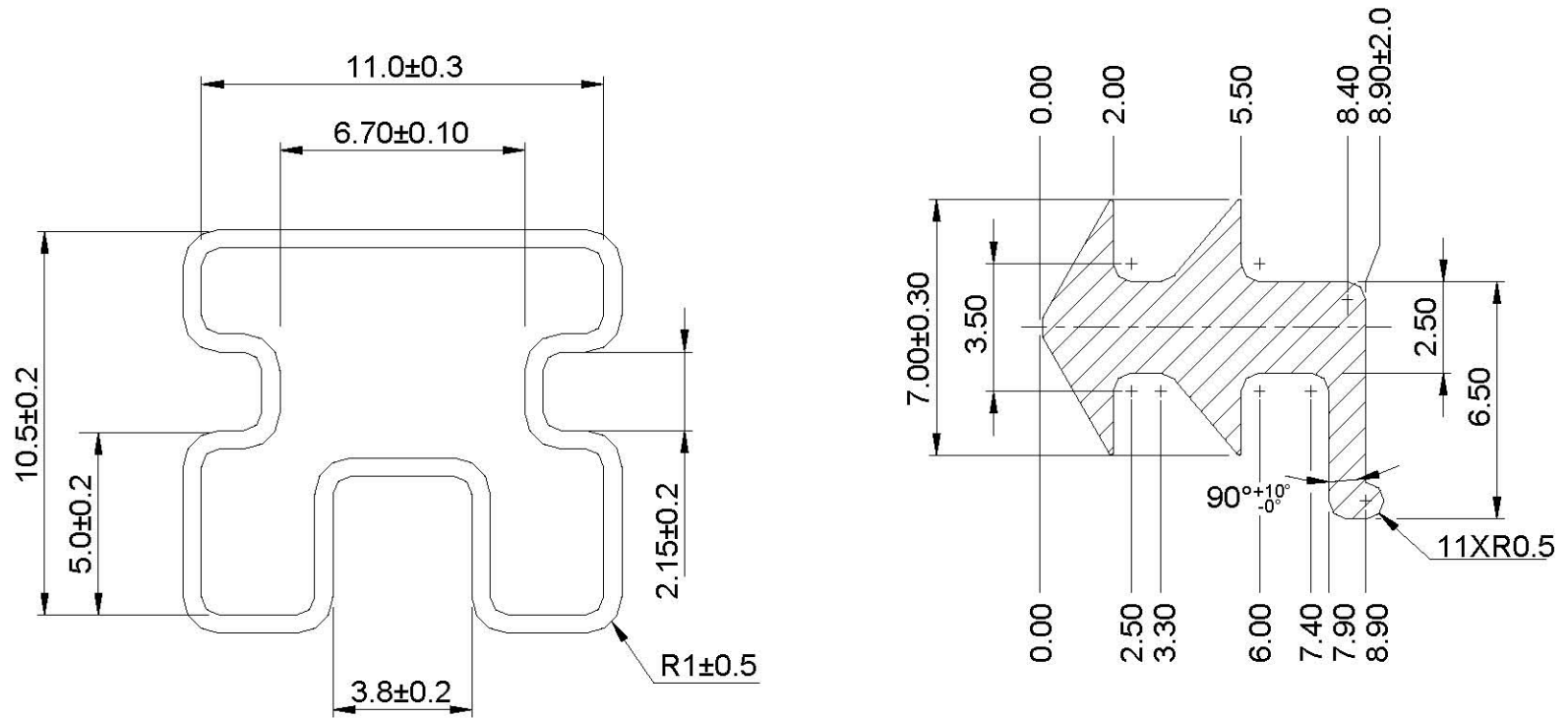
Prod. Size :

- 6 = 6x6 mm
- 2 = 12x12 mm
- = None Post
- ▲ = With Post
- < ▲ Only For 12x12 >
- Tactile Switch

PACKING

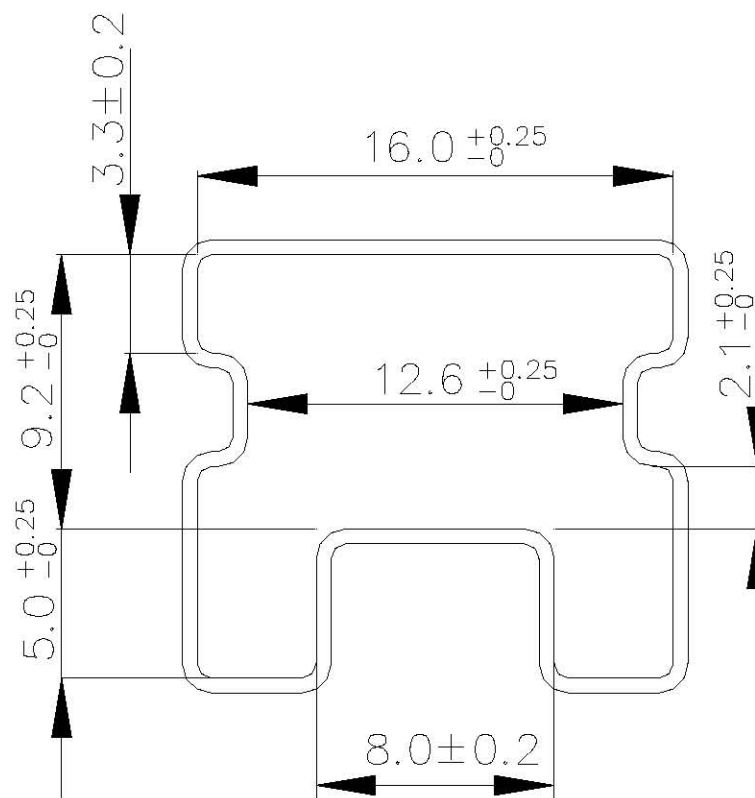
Part Number	Number Per Bag	Number Per Tube
DTS-6□□□	1000	-
DTS-61	-	77
DTS-62	-	77
DTS-2	500	-
DTS-2□□	-	39
KTSC-6□□	1500	-
KTSC-2□□	500	-

DTS-61.62 TUBE



General Tolerance : $\pm 0.1\text{mm}$

DTS-2 □ □ TUBE



General Tolerance : $\pm 0.1\text{mm}$